



At Langford Village Academy, we are GREAT because we focus on these values:

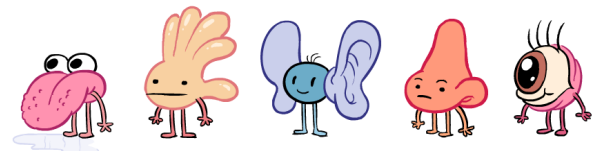
**Gratitude, Respect, Empathy, Acceptance, Teamwork**

**Please can we remind you that the school car park is for staff only and should not be used for pickup from clubs. Thank you.**

## Diary Dates

14.10.24	EYFS Parents Evening
15.10.24	Happy Bags Collection
16.10.24	Flu Immunisation— Details to Follow
16.10.24	EYFS Parents Evening
17.10.24	EYFS Open Morning for Sept 2025
24.10.24	Harvest Festival EYFS
25.10.24	Last Day of Term
04.11.24	Return Back to School
04.11.24	Year 6 Information Evening
15.11.24	Children in Need
W.C. 18.11.24	Year 6 Mock SATS Week

As part of our Science topic 'Amazing Me!', this week Turtle Class are using all five senses to explore a range of fruits. We have been identifying similarities and differences and classifying the fruits in different ways. We have used words to describe their appearance and texture e.g. smooth or spiky, their smell and finally their taste e.g. sharp, sour, sweet. Later, we will also be talking about the importance of a healthy diet to keep our bodies in peak condition!



Thank you to everyone who took part in the "Wear Yellow for Mental Health" We raised an amazing £106 to put towards our nurture and SEND rooms.

This week, in our Music lesson, Sting Ray class have been learning about Rock and Roll music, focusing particularly on the song 'Rock around the clock'. The children learned about basslines in music and used glockenspiels to play the accompanying bass. Shakers were also used to play the main beat of the song. The class had a very enjoyable lesson!





Please can we remind you to be mindful and respectful of our neighbours when parking during school drop off and collection.

### After school clubs and times:

Dance - Tuesday 3.20-4.20pm

Football - Tuesday 3.20-4.20pm

Drama - Wednesday 3.20-4.15pm

If your child does not have PE on their club day please send them in in their school uniform with suitable clothing for their activity in a bag.

### French Club is on Tuesday lunch times

Tuck shop, 20p per item - Tuesdays KS1, Thursday KS2.

### PE days:

Starfish—Thursday

Jellyfish—Thursday

Seahorse—Monday & Friday

Turtle—Monday & Thursday

Penguin—Thursday & Friday

Sealion—Wednesday & Friday

Dolphin—Tuesday & Wednesday

Orca—Monday & Tuesday

Manta Ray—Tuesday & Friday

Sting Ray—Wednesday & Friday

Otter—Tuesday & Wednesday

Please make sure the children wear their PE Kit to school and bring in spare footwear (these do not have to be trainers)

### Special Award for the Week

Gracie B, Layla-May, Freddie J, Archer UK,  
Charlie S, Nye S, Aaron B, Poppy T, George C

### Class Attendance for the Week

Turtle 99%

Dinner Menu week 1

W/C 14.10.24